

PWB2400



FEATURES:

- Li-ion LFP battery module
- Wireless Charger
- Solar Charging
- Fast Charging integrated 1h 80%
- Parallel Connector
- EPS Emergency power supply



Output specifications

Output power (Continuous)	watt	2400
Output power peak (1.5s)	watt	4800
Frequency	Hz	50
Voltage	V	230
Phase (s)		1



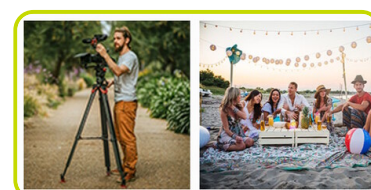
Battery specifications

Battery (Type)	Li-ion LFP	
Battery rated Voltage	VDC	51.2
Battery design life @80% DoD	cycles	2000
Battery Nominal capacity (sizes)	W/h	2150



General Description

PWB Portable Power Station is a universal Battery Energy Storage system ideally suited to a range of applications, delivering reliable power in the most cost effective and environmentally sensitive way. Energy stored within the unit is converted electronically into AC power. Power can be stored from connection to the grid, from a generator or solar PV to ensure the most efficient, lowest maintenance and best environmental impact is achieved. Real time monitoring is provided by on board display to ensure an efficient usage.



Input specifications

Max single-phase input	W	1800
a) Charging Times @80%	h	1
b) Charging Times @100%	h	2
Max DC Solar Charging	W	400
a) DC/Solar Charging Times @80% (with 400W of solar panels and best solar lighting condition)	h	5
b) DC/Solar Charging Times @80% (with 200W of solar panels and best solar lighting condition)	h	8
Car lighter charging (12V DC)	A	8
Car lighter charging time @80%	h	19

Installation data

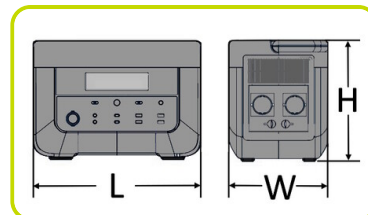
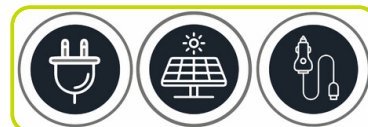
Length	(L) mm	496
Width	(W) mm	266
Height	(H) mm	350
Weight	kg	29
Discharging temperature range	°C	-10...40
Charging temperature range	°C	0...40
Carton box dimension LxWxH	mm	620x380x490
Total weight (carton box included)	kg	35

Instruments, controls & connections

Inverter protection Short Circuit	✓
Inverter protection Overload	✓
Inverter protection Over Temperature	✓
Inverter protection Low Battery	✓
System status control panel	✓
Battery condition	✓
Solar charge controller MPPT	✓
Parallel connector	✓

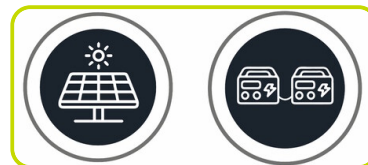
Output:

Schuko AC ports 230V	4
Car socket (DC 12V/10A)	1
DC 6514 (12V/5A)	2
USB-A 12 W Max (5V/2.4A)	2
USB-A Quick 24W Max (5/9/12V 3/2.2/2 A)	2
USB-C 100 W Max (5/9/12/15/20V 3/5A)	2
Wireless charger	2



Optionals available:

- Solar Panel PWB Power Station •
- Parallel wires PWB Power Station •



• Optional | Solar Panel PWB Power Station - specs:

Solar Panel Rated Power	W	200
Solar Panel Rated Voltage	V	20
Solar Panel Rated Current	A	10
Output interface mode	Type	MC4
Included cables to connect power station		✓
Solar Panel dimension LxWxH	mm	2390x564x25
Foldable dimension LxWxH	mm	635x564x45
Number of Folding		4
Weight	kg	8.4



• Optional | Parallel wires PWB Power Station - specs:

Parallel connection Capacity + Power	< W	3600
Parallel connection Cable length	cm	110

Examples of parallel available:

Parallel models:	PWB1200	PWB1200
Parallel Capacity	W/h	2150
Parallel Power	W	2400

Parallel models:	PWB1200	PWB2400
Parallel Capacity	W/h	3225
Parallel Power	W	3600

Parallel models:	PWB2400	PWB2400
Parallel Capacity	W/h	4300
Parallel Power	W	3600

